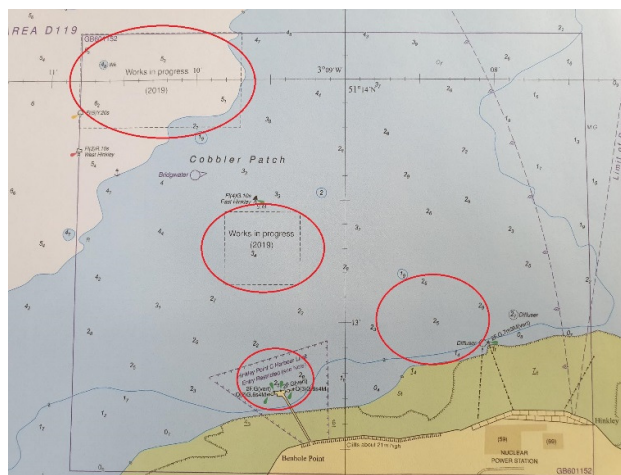


## LOCAL NOTICE TO MARINERS NO 06 OF 2020

### Hinkley Point C – Sedimentation Sampling Campaign

Mariners are advised that from Wednesday 19<sup>th</sup> August the Jack up Barge “Excalibur” will be operating within Hinkley Point C Harbour Authority limits and approaches for a period of up to two months. “Excalibur” will be conducting sedimentation survey sampling in various locations (see attached chart extract with red circles). “Excalibur” will be supported by two shallow draft anchor handling tugs. The vessels may be contacted directly and will maintain a listening watch on VHF channel 16 and 87.

Name	Type of vessel	Call Sign	MMSI number	Length
EXCALIBUR	Jack-up Barge	YJXQ5	576152000	60m
DUTCH PEARL	Tug (primary tow)	PBZP	246376000	31.10m
DUKE OF NORMANDY	Tug (support)	MHZS8	235026811	26.21m



Whilst conducting marine operations these vessels will often be ‘restricted in their ability to manoeuvre’ or ‘under tow’ and will display the appropriate lights and shapes in accordance with the International Regulations for Preventing Collisions at Sea 1972 (as amended).

Vessels within this area are requested to proceed with caution and maintain a **safe distance well clear at all times**.

This notice will be self-cancelling on completion of the survey works. For further information, please contact the Harbour Master via the contact details below.

**Nick Clarence AFNI**  
**Harbour Master - Hinkley Point C**

EDF Energy - Nuclear New Build, Hinkley Point C, Somerset, TA5 1UF

Tel. **0800 096 9650** (24hr)

[hinkley-enquiries@edf-energy.com](mailto:hinkley-enquiries@edf-energy.com)

[www.edfenergy.com/hpcha](http://www.edfenergy.com/hpcha)

**Owners, Agents, Charterers, Marinas, Yacht Clubs and Recreational Sailing Organisations should ensure that the contents of this Notice are made known to the masters or persons in charge of their vessels or craft.**